

# QUICK-FIT TERMINALS

Designers' Choice



## .250 "STURDI-MOUNT" PC QUICK-FIT HEADERS

- Ideal for rugged multi-insertion applications
- Pre-assembled header reduces PC assembly costs
- Increases PC board retention strength
- Keeps terminals perpendicular
- Maintains position for wave soldering

AVAILABLE WITH TIN PLATED BRASS OR STEEL TABS



### SPECIFICATIONS

Material: .032 Brass or Steel, Tin Plated

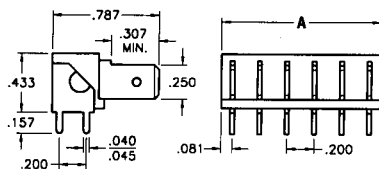
Insulator: Thermoplastic, UL Rated 94V-0

Voltage Rating: 500VAC Current Rating: 15 Amps

Temperature Rating: -58°F to +292°F (-50°C to +145°C)

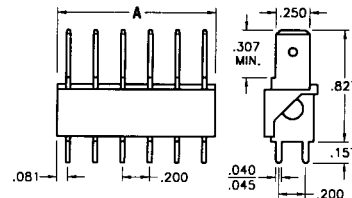
### .250 HORIZONTAL

BRASS TABS CAT. NO.	STEEL TABS CAT. NO.	NO. TABS	A DIM.
7802	7822	2	.362
7803	7823	3	.562
7804	7824	4	.762
7805	7825	5	.962
7806	7826	6	1.162



### .250 VERTICAL

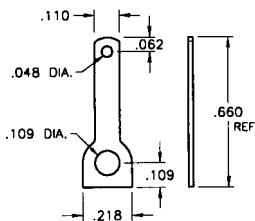
BRASS TABS CAT. NO.	STEEL TABS CAT. NO.	NO. TABS	A DIM.
7812	7832	2	.362
7813	7833	3	.562
7814	7834	4	.762
7815	7835	5	.962
7816	7836	6	1.162



Mtg. Holes: .052 Dia. x .200 Centers

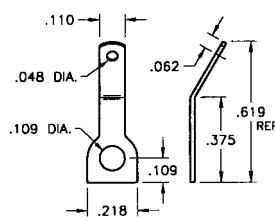
## .110 / .187 / .205 QUICK-FIT RIVET TYPES

### .110 TABS



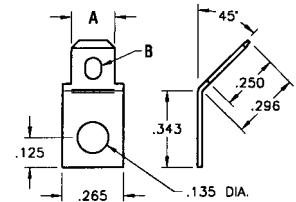
CAT. NO.	MATERIAL
1269	.020 Brass, Tin Plate

### .110 TABS



CAT. NO.	MATERIAL
1270	.020 Brass, Tin Plate

### .187 / .205 TABS



CAT. NO.	MATERIAL	A	B
4005	.020 Brass, Tin Plate	.205	.132 x .070 Slot
4095	.020 Brass, Tin Plate	.187	.078 Dia. Hole



## 45° & 90° QUICK-FIT RIVET TYPES



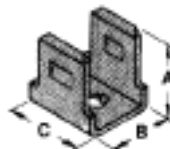
### .110 / .187 / .250 TABS



90 Degree MATERIAL: Bright Brass

CAT. NO.	TAB SIZE	MAT'L THICK	A	B	C	HOLE DIA.
2002	.110	.020	.360	.250	.180	.096
1261	.187	.020	.375	.250	.250	.099
1256	.250	.032	.405	.312	.312	.130

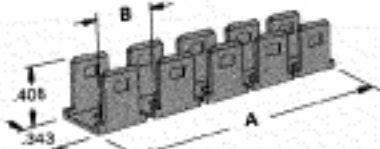
### .110 / .187 / .250 TABS



90 Degree MATERIAL: Bright Brass

CAT. NO.	TAB SIZE	MAT'L THICK	A	B	C	HOLE DIA.
2003	.110	.020	.350	.383	.180	.096
1262	.187	.020	.312	.250	.250	.099
1257	.250	.032	.405	.343	.312	.130

### .250 TAB



MULTIPLE 90° MATERIAL: Bright Brass

CAT. NO.	TAB SIZE	MAT'L THICK	A	B	HOLE DIA.	PAIRS
1005	.250	.032	.703	.375	.130	2
1006	.250	.032	1.075	.375	.130	3
1007	.250	.032	1.422	.375	.130	4
1008	.250	.032	1.837	.375	.130	5



45 Degree MATERIAL: Bright Brass

CAT. NO.	TAB SIZE	MAT'L THICK	A	B	C	HOLE DIA.
2004	.110	.020	.350	.270	.180	.096
1271	.187	.020	.375	.250	.250	.099
1280	.250	.032	.405	.312	.312	.130



45 Degree MATERIAL: Bright Brass

CAT. NO.	TAB SIZE	MAT'L THICK	A	B	C	HOLE DIA.
2005	.110	.020	.350	.383	.180	.096
1263	.187	.020	.312	.375	.265	.135
1258	.250	.032	.405	.343	.312	.130

### CUSTOM QUICK-FIT TERMINALS

Keystone is fully integrated to meet your total design & production needs.

Manufacturing custom designs & modifications of standard items is our specialty.

Quotations on special stampings furnished promptly upon receipt of sample, sketch, print or CAD drawings.